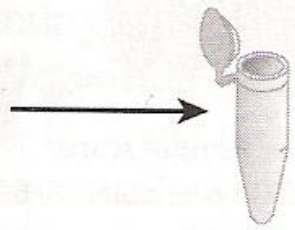


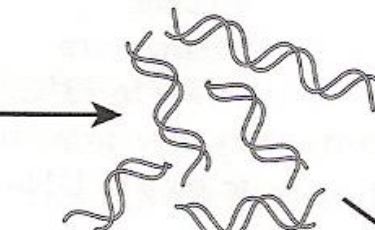
GENETIC FINGERPRINTING

(Add labels to your diagram)

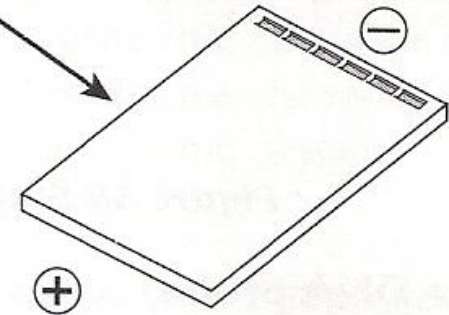
E.g Blood sample



DNA is extracted from the white blood cells



The DNA is cut into fragments by a restriction enzyme

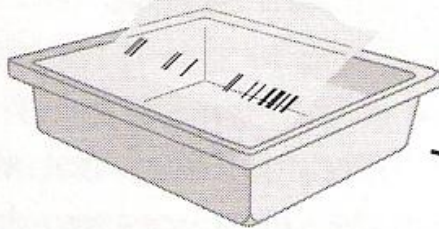


The fragments are separated by size by electrophoresis on an agarose gel

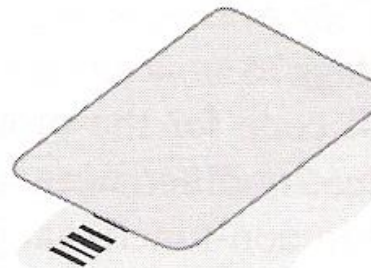
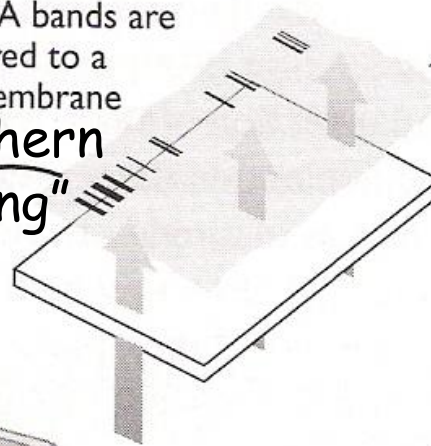
DNA treated to make it single stranded e.g. heated

The DNA bands are transferred to a nylon membrane
"Southern Blotting"

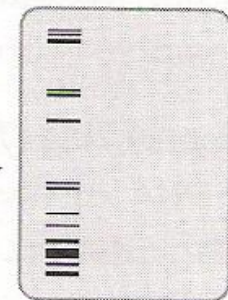
A radioactive DNA probe is prepared



The probe binds to specific sequences of DNA on the membrane



A sheet of X-ray film is placed on the membrane to detect the radioactive pattern



The X-ray film is developed to reveal a pattern of bands, which is known as a DNA fingerprint

Radioactive probes fog the film to create the dark bands